

测试报告

编号 : SHIN1402006081MR_CN

日期 : 2014-02-27

页码 : 1 of 6

客户名称: 深圳市美力高集团有限公司

客户地址: 深圳市福田区桂花路5号加福广场(福朋喜来登酒店)西楼6层

下列样品由客户提供及确认:

样品名称 : MVT800 GPS 车载定位跟踪器

SGS 参考号 : SHIN1402005961PS

产品规格 : IP65

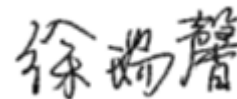
收样日期 : 2014-02-24

测试开始时间 : 2014-02-24

测试结束时间 : 2014-02-27

测试结果 : 请见下页

通标标准技术服务(上海)有限公司
授权签名



徐瑞馨

授权签字人

This document is issued by the Company subject to its General Conditions of Service printed overleaf, available on request or accessible at <http://www.sgs.com/en/Terms-and-Conditions.aspx> and, for electronic format documents, subject to Terms and Conditions for Electronic Documents at <http://www.sgs.com/en/Terms-and-Conditions/Terms-e-Documents.aspx>. Attention is drawn to the limitation of liability, indemnification and jurisdiction issues defined therein. Any holder of this document is advised that information contained hereon reflects the Company's findings at the time of its intervention only and within the limits of Client's instructions, if any. The Company's sole responsibility is to its Client and this document does not exonerate parties to a transaction from exercising all their rights and obligations under the transaction documents. This document cannot be reproduced except in full, without prior written approval of the Company. Any unauthorized alteration, forgery or falsification of the content or appearance of this document is unlawful and offenders may be prosecuted to the fullest extent of the law. Unless otherwise stated the results shown in this test report refer only to the sample(s) tested and such sample(s) are retained for 30 days only.

Attention: To ensure the authenticity of testing/inspection report & certificate, please contact us at telephone: (86-755)83071443, or email: CN.Doccheck@sgs.com

测试报告

编号 : SHIN1402006081MR_CN

日期 : 2014-02-27

页码 : 2 of 6

结果总结:

序号	测试项目	测试方法	结果	结论
1.	IP6X	IEC 60529:2001 及 客户要求	见测试要求	合格
2.	IPX5	EC 60529:2001 及 客户要求	见测试要求	合格

备注: 合格: 达到要求
不合格: 未达到要求
/: 不下判定

This document is issued by the Company subject to its General Conditions of Service printed overleaf, available on request or accessible at <http://www.sgs.com/en/Terms-and-Conditions.aspx> and, for electronic format documents, subject to Terms and Conditions for Electronic Documents at <http://www.sgs.com/en/Terms-and-Conditions/Terms-e-Documents.aspx>. Attention is drawn to the limitation of liability, indemnification and jurisdiction issues defined therein. Any holder of this document is advised that information contained hereon reflects the Company's findings at the time of its intervention only and within the limits of Client's instructions, if any. The Company's sole responsibility is to its Client and this document does not exonerate parties to a transaction from exercising all their rights and obligations under the transaction documents. This document cannot be reproduced except in full, without prior written approval of the Company. Any unauthorized alteration, forgery or falsification of the content or appearance of this document is unlawful and offenders may be prosecuted to the fullest extent of the law. Unless otherwise stated the results shown in this test report refer only to the sample(s) tested and such sample(s) are retained for 30 days only.

Attention: To ensure the authenticity of testing/inspection report & certificate, please contact us at telephone: (86-755)83071443, or email: CN.Doccheck@sgs.com

测试报告

编号 : SHIN1402006081MR_CN

日期 : 2014-02-27

页码 : 3 of 6

1 测试项目: IP6X

样品描述: MVT800 GPS 车载定位跟踪器

测试方法: IEC 60529:2001 及客户要求

测试条件:

测试粉尘: 滑石粉

粉尘浓度: 2kg/m³ 粉尘并在试验中保持悬浮

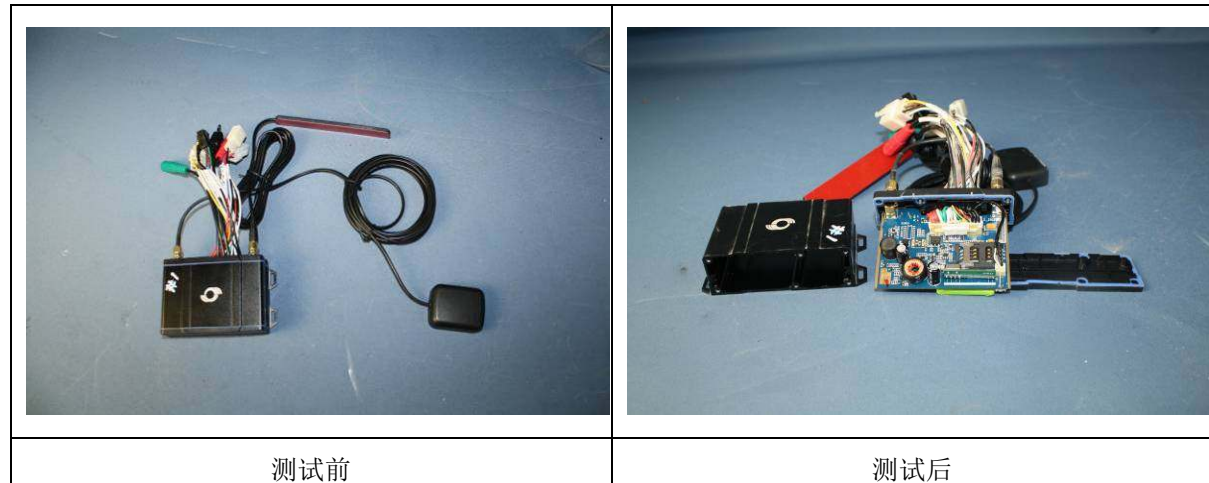
测试周期: 8 小时

测试要求: 试验后样品内部无尘进入。

测试结果:

样品	测试结果	结论
#1	试验后样品内部无尘	合格

测试照片:



This document is issued by the Company subject to its General Conditions of Service printed overleaf, available on request or accessible at <http://www.sgs.com/en/Terms-and-Conditions.aspx> and, for electronic format documents, subject to Terms and Conditions for Electronic Documents at <http://www.sgs.com/en/Terms-and-Conditions/Terms-e-Document.aspx>. Attention is drawn to the limitation of liability, indemnification and jurisdiction issues defined therein. Any holder of this document is advised that information contained hereon reflects the Company's findings at the time of its intervention only and within the limits of Client's instructions, if any. The Company's sole responsibility is to its Client and this document does not exonerate parties to a transaction from exercising all their rights and obligations under the transaction documents. This document cannot be reproduced except in full, without prior written approval of the Company. Any unauthorized alteration, forgery or falsification of the content or appearance of this document is unlawful and offenders may be prosecuted to the fullest extent of the law. Unless otherwise stated the results shown in this test report refer only to the sample(s) tested and such sample(s) will be retained for 30 days only.

Attention: To ensure the authenticity of testing/inspection report & certificate, please contact us at telephone: (86-755)83071443, or email: CN.Doccheck@sgs.com

测试报告

编号 : SHIN1402006081MR_CN

日期 : 2014-02-27

页码 : 4 of 6



测试中

设备信息:

设备	型号	设备编号	校准日期	下次校准日期
砂尘试验箱	KS-F30	P-237	2013-5-9	2014-5-8

This document is issued by the Company subject to its General Conditions of Service printed overleaf, available on request or accessible at <http://www.sgs.com/en/Terms-and-Conditions.aspx> and, for electronic format documents, subject to Terms and Conditions for Electronic Documents at <http://www.sgs.com/en/Terms-and-Conditions/Terms-e-Documents.aspx>. Attention is drawn to the limitation of liability, indemnification and jurisdiction issues defined therein. Any holder of this document is advised that information contained herein reflects the Company's findings at the time of its intervention only and within the limits of Client's instructions, if any. The Company's sole responsibility is to its Client and this document does not exonerate parties to a transaction from exercising all their rights and obligations under the transaction documents. This document cannot be reproduced except in full, without prior written approval of the Company. Any unauthorized alteration, forgery or falsification of the content or appearance of this document is unlawful and offenders may be prosecuted to the fullest extent of the law. Unless otherwise stated the results shown in this test report refer only to the sample(s) tested and such sample(s) are retained for 30 days only.

Attention: To ensure the authenticity of testing/inspection report & certificate, please contact us at telephone: (86-755)83071443, or email: CN.Doccheck@sgs.com

测试报告

编号 : SHIN1402006081MR_CN

日期 : 2014-02-27

页码 : 5 of 6

2.测试项目: IPX5

样品描述: MVT800 GPS 车载定位跟踪器

测试方法: IEC 60529:2001 及客户要求

测试条件:

喷嘴内径: $\Phi 6.3\text{mm}$

流量: 12.5LPM

喷射距离: 2.5m~3.0m

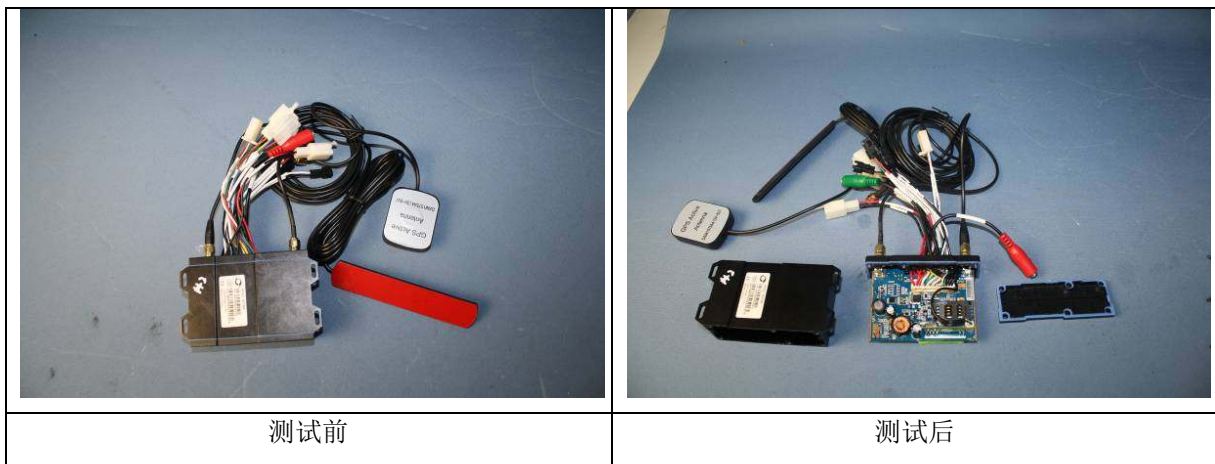
测试时间: 3min

测试要求: 试验后样品内部无水进入。

测试结果:

样品	测试结果	结论
#2	试验后样品内部无水	合格

测试照片:



测试前

测试后

This document is issued by the Company subject to its General Conditions of Service printed overleaf, available on request or accessible at <http://www.sgs.com/en/Terms-and-Conditions.aspx> and, for electronic format documents, subject to Terms and Conditions for Electronic Documents at <http://www.sgs.com/en/Terms-and-Conditions/Terms-e-Document.aspx>. Attention is drawn to the limitation of liability, indemnification and jurisdiction issues defined therein. Any holder of this document is advised that information contained hereon reflects the Company's findings at the time of its intervention only and within the limits of Client's instructions, if any. The Company's sole responsibility is to its Client and this document does not exonerate parties to a transaction from exercising all their rights and obligations under the transaction documents. This document cannot be reproduced except in full, without prior written approval of the Company. Any unauthorized alteration, forgery or falsification of the content or appearance of this document is unlawful and offenders may be prosecuted to the fullest extent of the law. Unless otherwise stated the results shown in this test report refer only to the sample(s) tested and such sample(s) are retained for 30 days only.

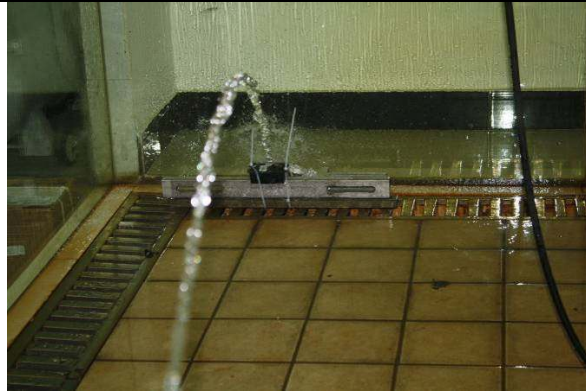
Attention: To ensure the authenticity of testing/inspection report & certificate, please contact us at telephone: (86-755)83071443, or email: CN.Doccheck@sgs.com

测试报告

编号 : SHIN1402006081MR_CN

日期 : 2014-02-27

页码 : 6 of 6



测试中

设备信息:

设备	型号	设备编号	校准日期	下次校准日期
流量计	FA20S-50	P-134-7	2013-7-22	2014-7-21
秒表	OAKIN	P-60-3	2013-4-8	2014-4-7
钢尺	/	P-187	2013-6-8	2014-6-7

- *该检测报告为由 SGS 通标标准技术服务（上海）有限公司发布的原检测报告 编号:

SHIN1402006081MR 日期: 2014-02-27 的中文译本, 如中英文有差异, 概以英文为准。

***** 报告结束*****



This document is issued by the Company subject to its General Conditions of Service printed overleaf, available on request or accessible at <http://www.sgs.com/en/Terms-and-Conditions.aspx> and, for electronic format documents, subject to Terms and Conditions for Electronic Documents at <http://www.sgs.com/en/Terms-and-Conditions/Terms-e-Documents.aspx>. Attention is drawn to the limitation of liability, indemnification and jurisdiction issues defined therein. Any holder of this document is advised that information contained herein reflects the Company's findings at the time of its intervention only and within the limits of Client's instructions, if any. The Company's sole responsibility is to its Client and this document does not exonerate parties to a transaction from exercising all their rights and obligations under the transaction documents. This document cannot be reproduced except in full, without prior written approval of the Company. Any unauthorized alteration, forgery or falsification of the content or appearance of this document is unlawful and offenders may be prosecuted to the fullest extent of the law. Unless otherwise stated the results shown in this test report refer only to the sample(s) tested and such sample(s) are retained for 30 days only.

Attention: To ensure the authenticity of testing/inspection report & certificate, please contact us at telephone: (86-755)83071443, or email: CN.Doccheck@sgs.com