

MEITRACK MD600 User Guide and Function Explanation



Documentation


File name	MEITRACK MD600 User guide		
Project	MD600	Creation date	2023-09-20
		Last updated	2023-09-20
Subproject	User guide	Total Pages	17
Version	V1.0	Privacy	External Documentation

Contents

1 Copyright and Disclaimer	- 4 -
2 Step-by-Step Quick Installation and Use	- 4 -
2.1 Install The Device	- 4 -
2.2 Configure The Device	- 9 -
2.3 Login to The Platform	- 12 -

1 Copyright and Disclaimer

Copyright © Meitrack Group 2023. All rights reserved.

MEITRACK and  are trademarks that belong to Meitrack Group and its subsidiary.

The user manual may be changed without notice.

Without prior written consent of Meitrack Group, this user manual, or any part thereof, may not be reproduced for any purpose whatsoever, or transmitted in any form, either electronically or mechanically, including photocopying and recording.

Meitrack Group shall not be liable for direct, indirect, special, incidental, or consequential damages (including but not limited to economic losses, personal injuries, and loss of assets and property) caused by the use, inability, or illegality to use the product or documentation.

2 Step-by-Step Quick Installation and Use

Quick installation and use of the device require only the following 9 steps:

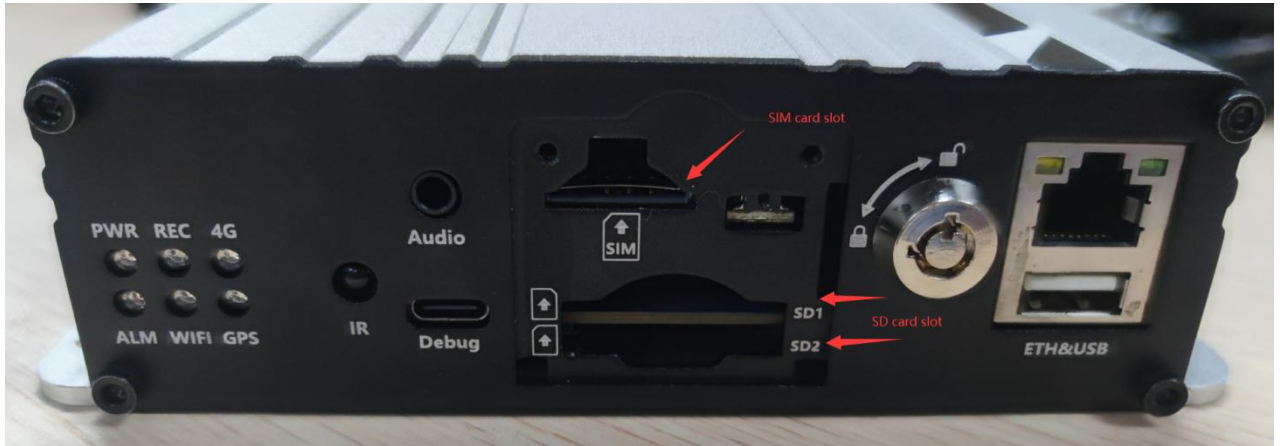
- (1) Insert the SD card lock key to open the SD card lock
- (2) Insert the SIM card into the SIM card slot
- (3) Load the SD card and hard drive
- (4) Connect the cameras, display, intercom handle, GSM antenna, WIFI antenna, GPS antenna
- (5) Connect the power supply and ACC (ACC must be connected to the positive terminal of the power supply, otherwise MDVR cannot be turned on)
- (6) Set the IP and PORT of the connected platform
- (7) Set up the data transfer network
- (8) Set your login username and password
- (9) Log in to the platform for video surveillance, search, call

2.1 Install The Device

- (1) Insert the SD card lock key to open the SD card lock



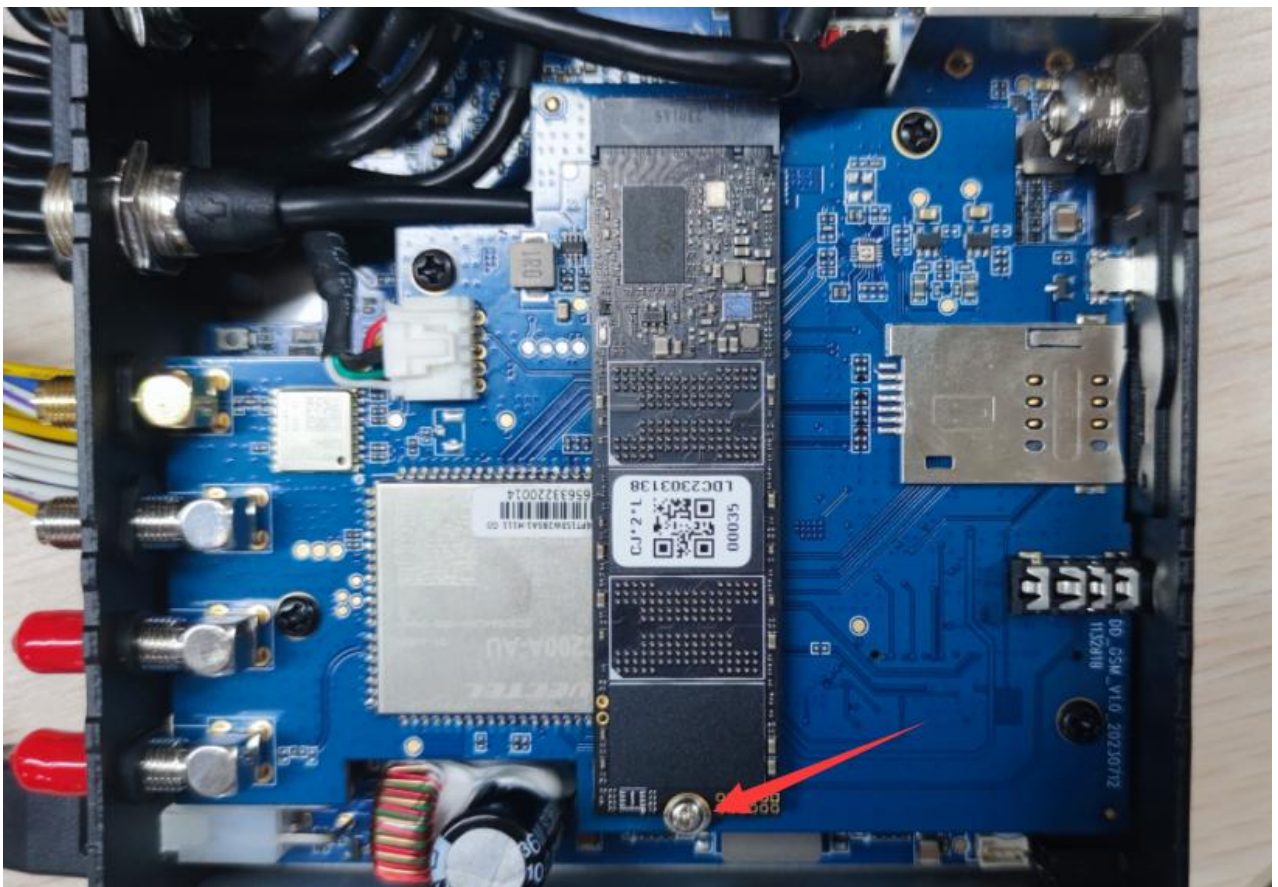
(2) Install the SIM card and SD card, and then lock the SD card lock back. (Note: After closing the card cover, you need to lock it with the key to ensure that the video function starts normally)



(3) Unscrew the four screws on the upper part of the housing and open the top cover.



Insert the hard disk into the slot and fix it with screws, then reassemble the housing.



- (3) Connect six cameras, display, GPS antenna, GSM antenna, WiFi antenna, and power cable.



Connect the power cable to PWR

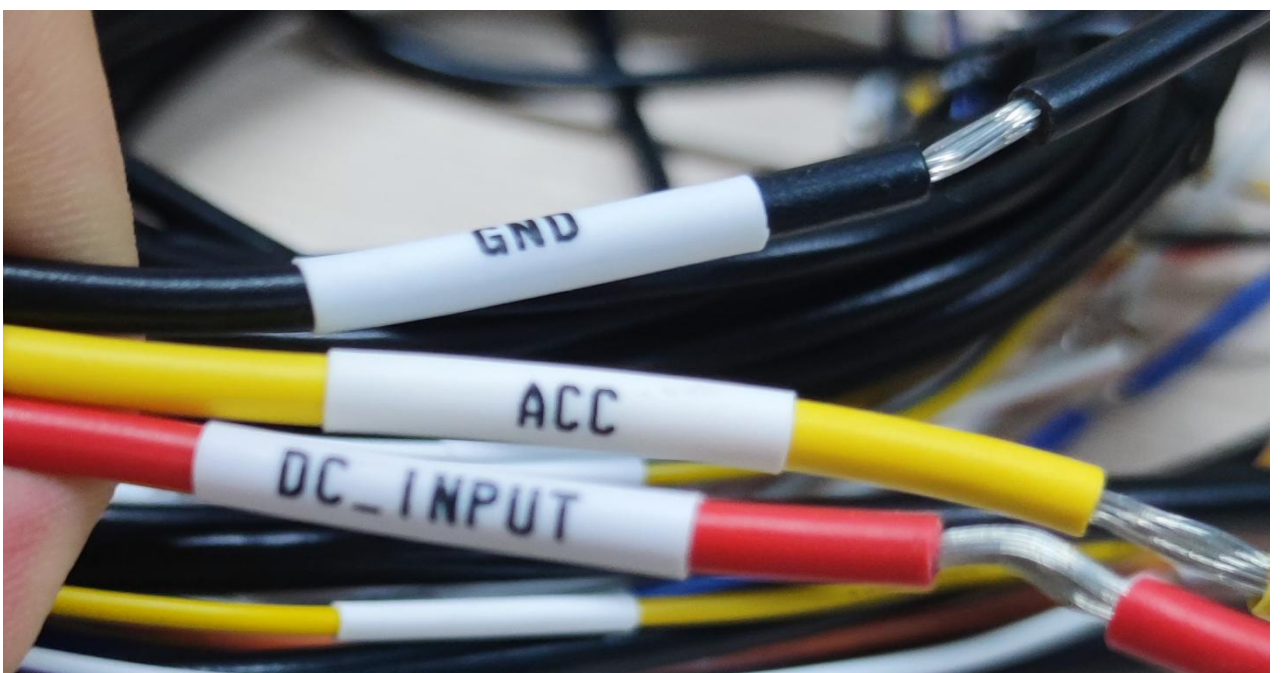
Connect 1~6 cameras to AV IN1~IN6

Connect the display to AV-OUT/VGA

Connect the intercom handle to MIC&SPK

Connect WIFI antenna (otherwise you can't use WIFI properly), GPS antenna, 3G/4G antenna

- (4) Supply power to the device and connect the ACC (Note: During testing, the recording function will only be enabled when the ACC is connected to the positive terminal of the power supply and the SD card cover is closed.)



(6) After power is supplied, the initialized MDVR records automatically, and the display will turn on automatically to play the real-time video:



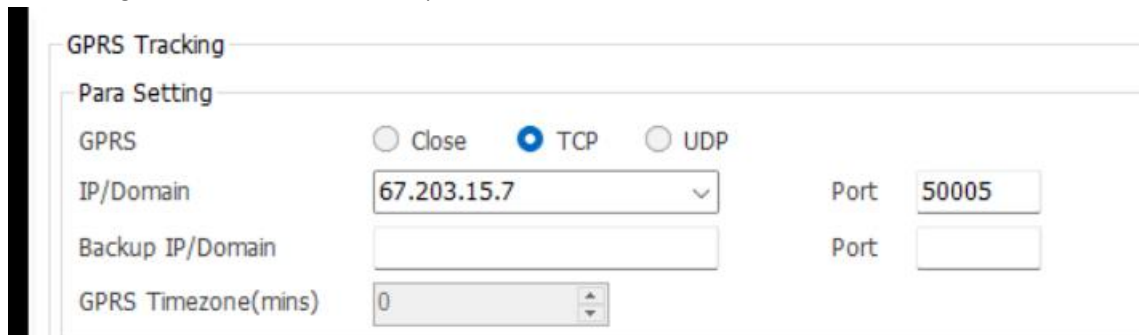
2.2 Configure The Device

After installing the device, you need to connect and configure the device by connecting to the network and the platform server. There are three ways to configure: connect USB to a computer for software configuration, send text messages for configuration, or remotely configure after connecting to the platform. Below is the introduction to how to use the Meitrack Manager software for quick configuration.



First of all, you must install the Meitrack Manager software (which can be downloaded from the official website www.meitrack.com). After installation, connect the type C data cable to the PC, you can configure it by following the steps below:

- (1) Configure the IP and PORT for data upload to the server:



GPRS Tracking

Para Setting

GPRS Close TCP UDP

IP/Domain Port

Backup IP/Domain Port

GPRS Timezone(mins)

Use SMS text messages for setup:

Configuration data upload the IP and PORT to send SMS command: 0000,A21,1,67.203.15.7,50005,APN(如 internet),APN_USER,APN_PASSWORD

- (2) Set the FTP server IP for the device to upload video data to the specified FTP server:



FTP Setting

FTP Enabled

IP/Domain Port

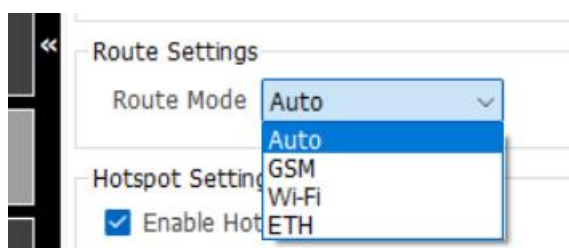
User Name Password

Remote Directory

Maximum File Size(MB)

- (3) Set up the network connection:

There are three ways to network the device: mobile network (3G/4G), WIFI network, and Ethernet. The priority of the networking mode is Ethernet >WIFI Network > Mobile Network, which means that in automatic mode, if the device is connected to Ethernet, then the WIFI connection and the mobile network connection will be disabled.



Route Settings

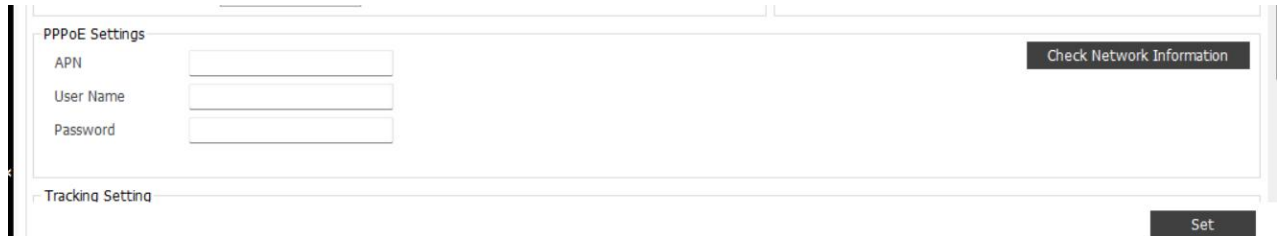
Route Mode

Hotspot Setting

Enable Hotspot

Configure mobile network:

Input the APN, APN user name, and APN password, and click SET to save the information.



PPPoE Settings

APN

User Name

Password

Tracking Setting

To configure the WiFi network:

As shown below, input the SSID and the corresponding password of WIFI, and click "SET" to connect to the WIFI network. At the same time, you can click "REFRESH" to search the nearby WIFI list for networking.



WiFi List Settings

WiFi Mode: Auto

SSID: Meitrack

Key: 88888888

My WiFi: Meitrack_5G

Nearby WiFi List

Configure Ethernet network:

Fill in the network IP, subnet, gateway, preferred DNS server, alternate DNS server



Ethernet Settings

IP Address: 192.168.3.249

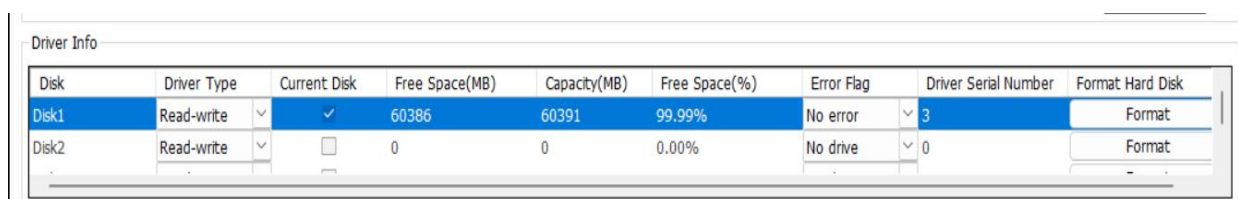
Subnet Mask: 255.255.255.0

Default Gateway: 192.168.3.1

Preferred DNS Server: 233.5.5.5

Alternate DNS Server: 233.6.6.6

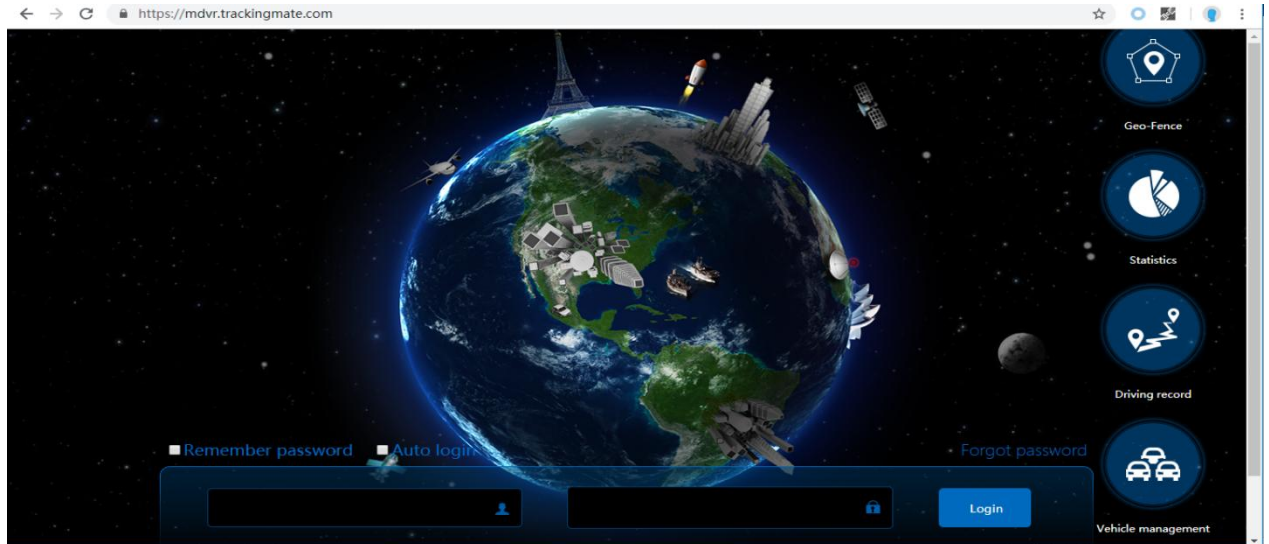
(5) Make sure the SD card is installed correctly, when you use it for the first time in the MDVR device, the system will initialize the SD card automatically when it detects that the format is not correct. Make sure the SD card has been initialized, if it shows "No Error", it means the initialization is complete.



Disk	Driver Type	Current Disk	Free Space(MB)	Capacity(MB)	Free Space(%)	Error Flag	Driver Serial Number	Format Hard Disk
Disk1	Read-write	<input checked="" type="checkbox"/>	60386	60391	99.99%	No error	3	<input type="button" value="Format"/>
Disk2	Read-write	<input type="checkbox"/>	0	0	0.00%	No drive	0	<input type="button" value="Format"/>

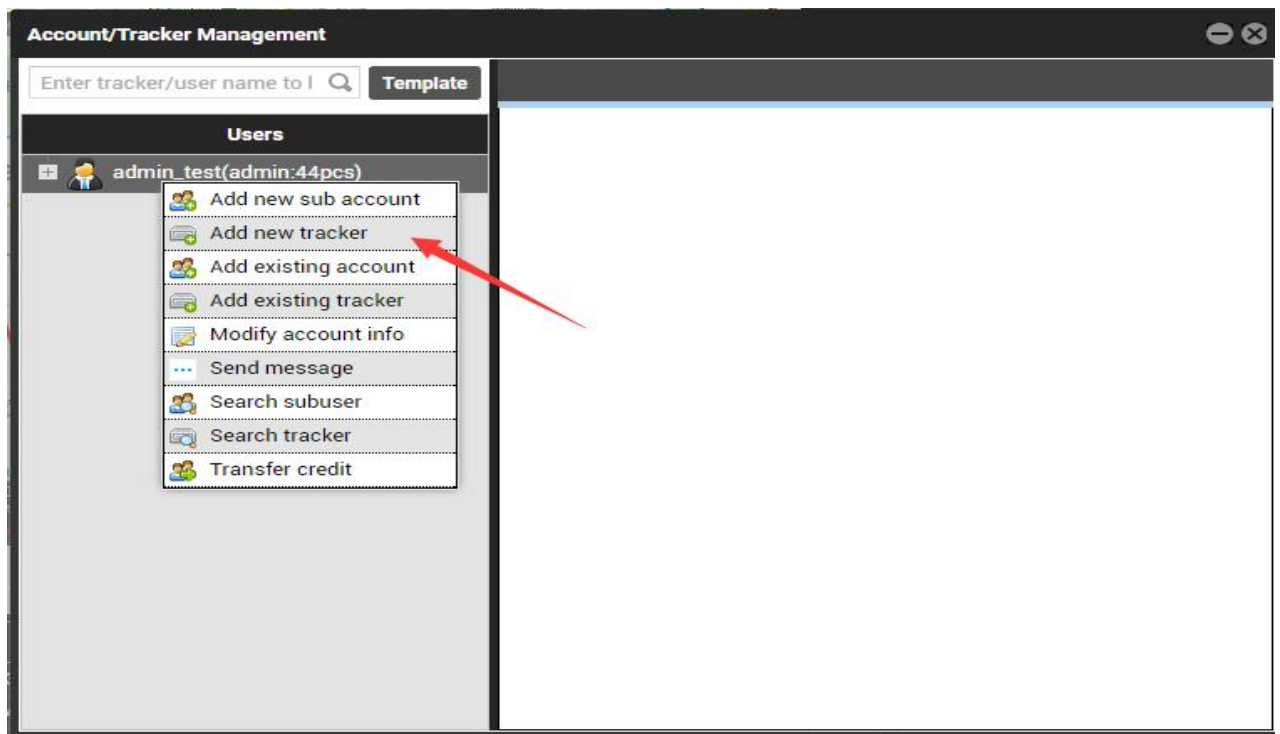
2.3 Login to The Platform

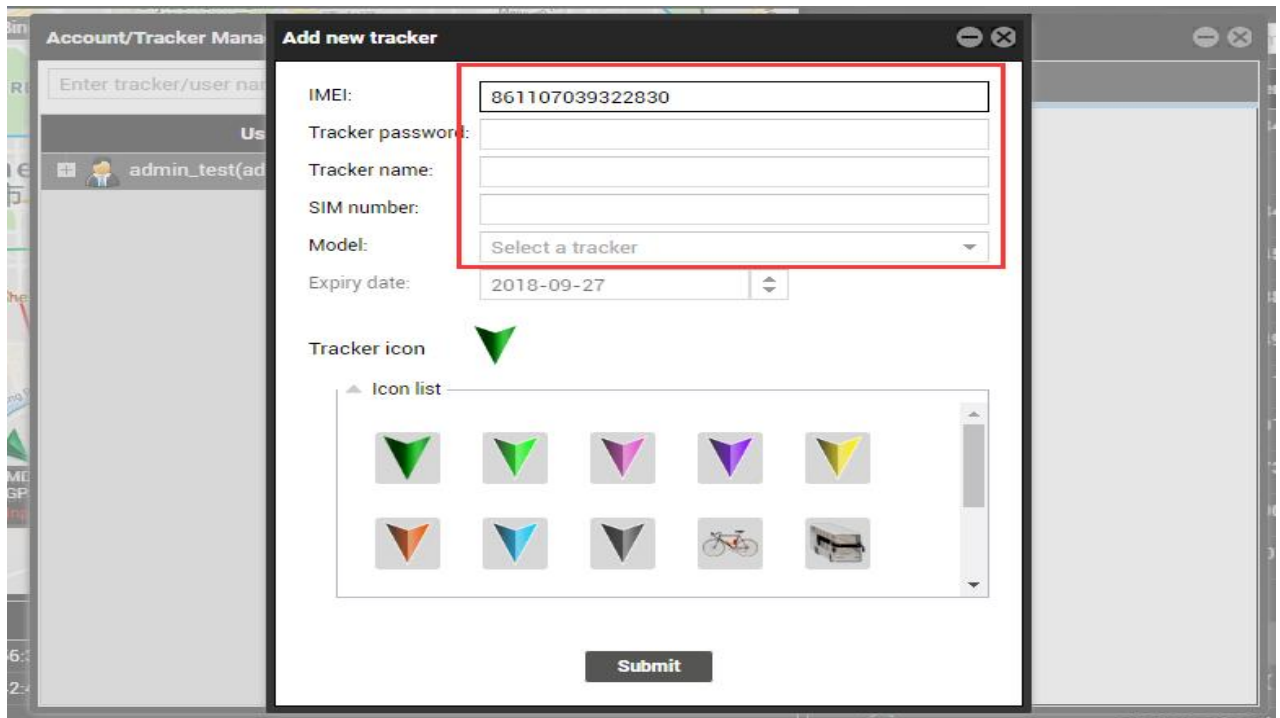
Login to <https://mdvr.trackingmate.com/>, enter the corresponding password.



Add a device:

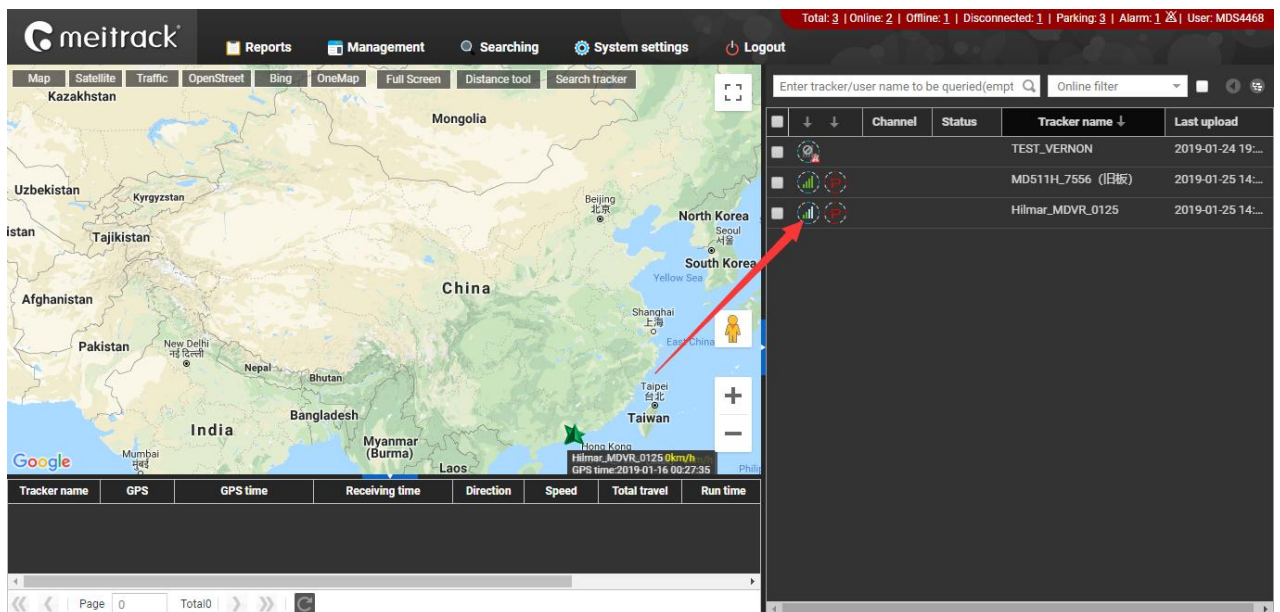
Open "Management Center", "Account Device Management", right-click the account icon, click "Add New Terminal", fill in the relevant information, the IMEI must be the same as that of the device itself. The IMEI here must be consistent with that of the device itself, otherwise, the platform cannot recognize it. Modify the expiration time, and click "Submit", and the corresponding number of years will be consumed:





Check if the device is online:

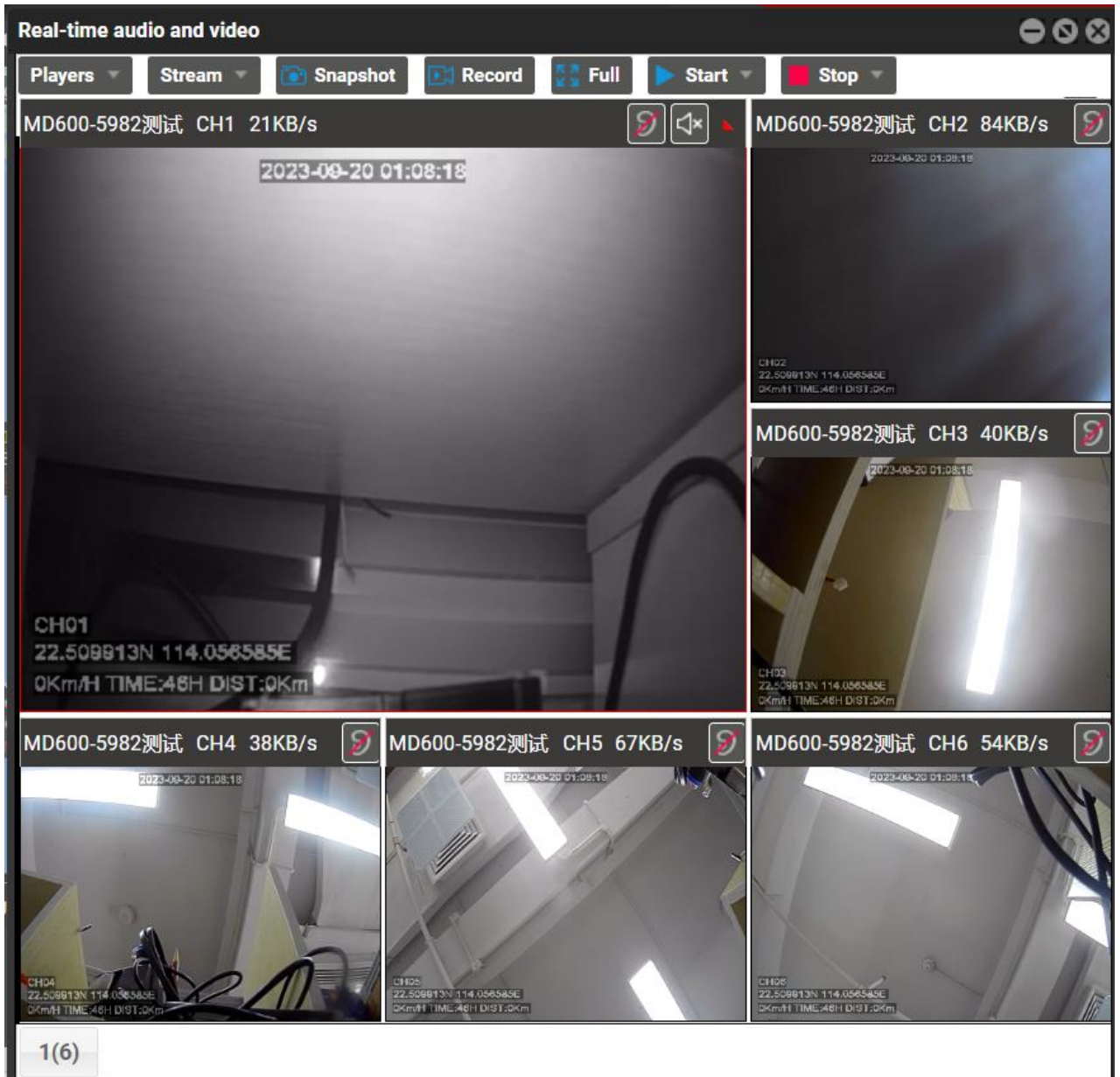
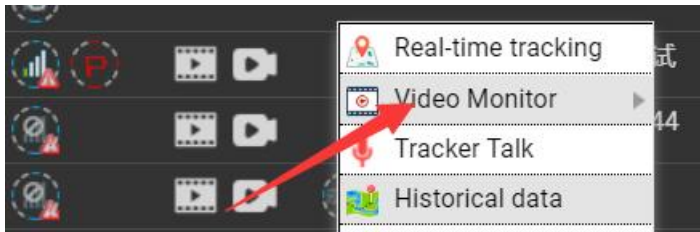
If the "signal icon" with a green grid appears, it means that the device is successfully online:



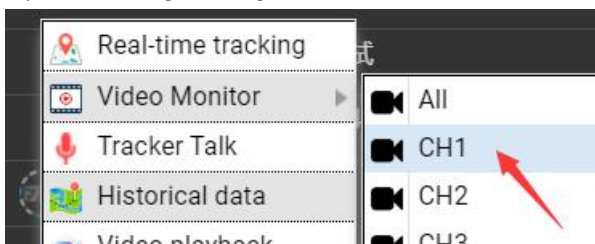
Monitoring:

Click the live stream chart or right-click the device and click "Video Monitor" for full

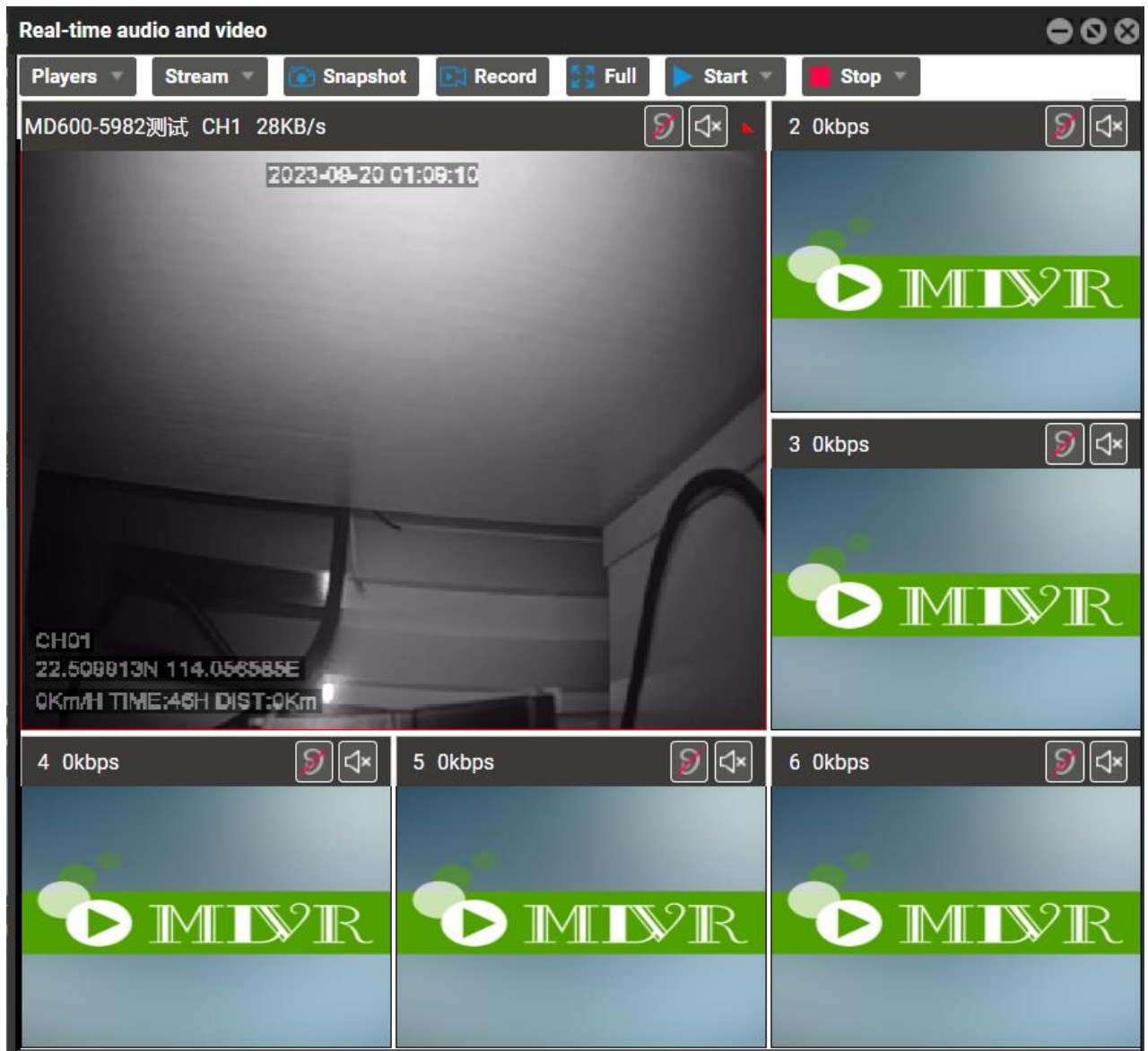




If you are clicking on a single channel camera, such as CH1



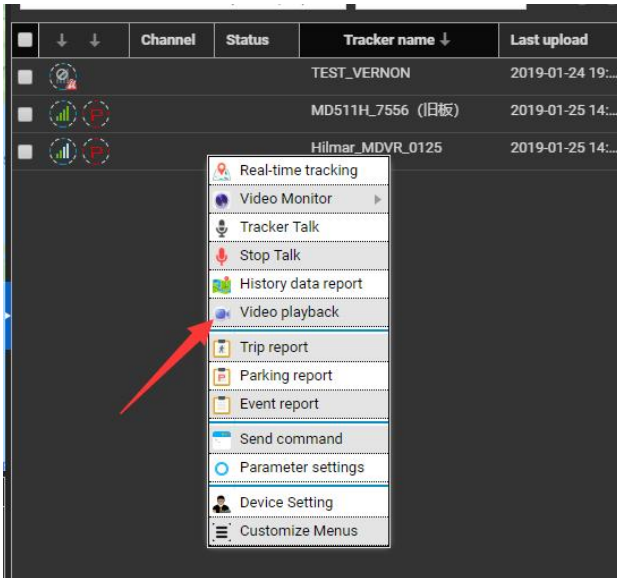
Then only the corresponding channel camera can be played:

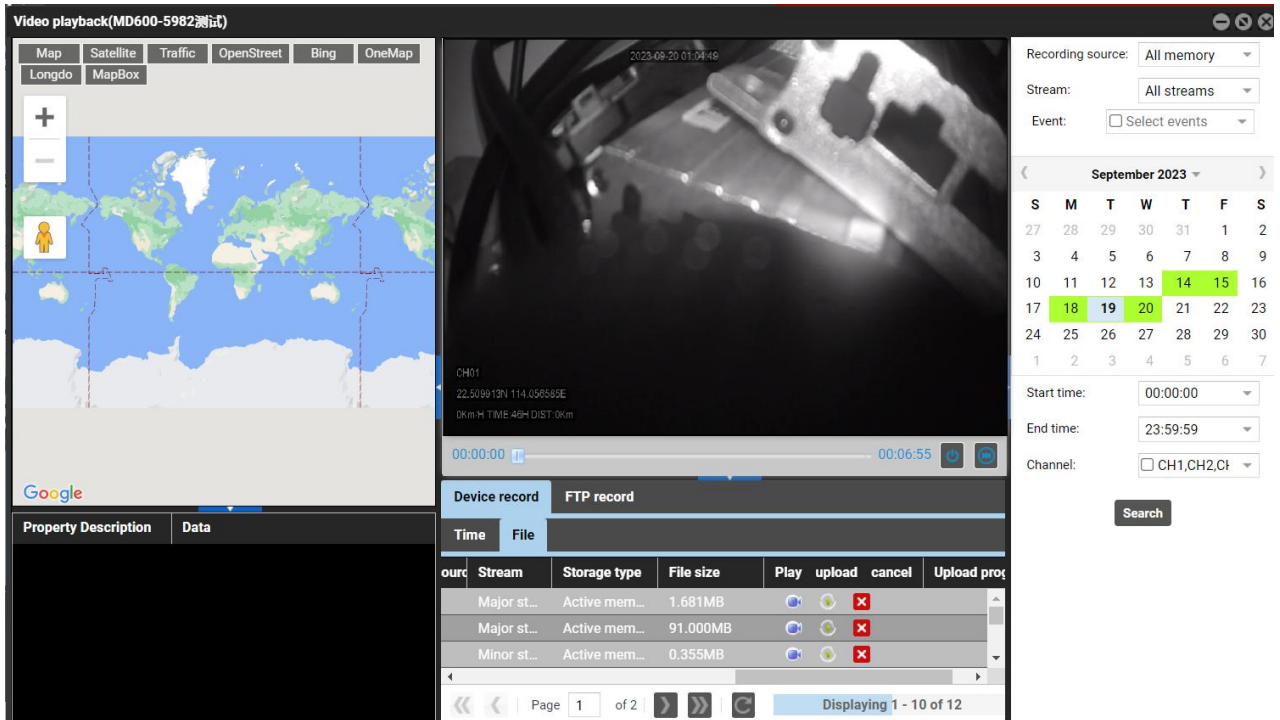


Video playback retrieval:

Click the playback icon or right click "Video playback", select the corresponding camera channel, select the corresponding time period, then you can play back the video.



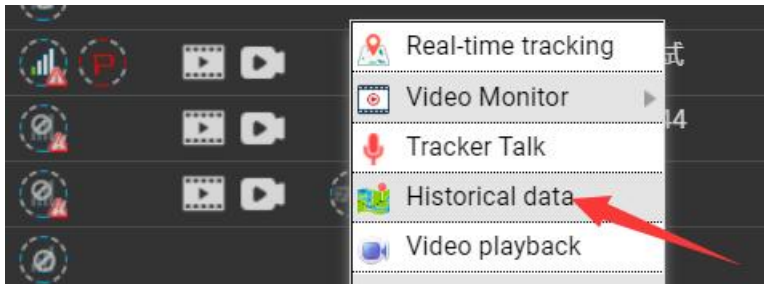




In the above figure, the button under **Play** represents playing the current video, and the button under **Upload** represents playing the video and uploading the video to the FTP server.

Historical positioning data query:

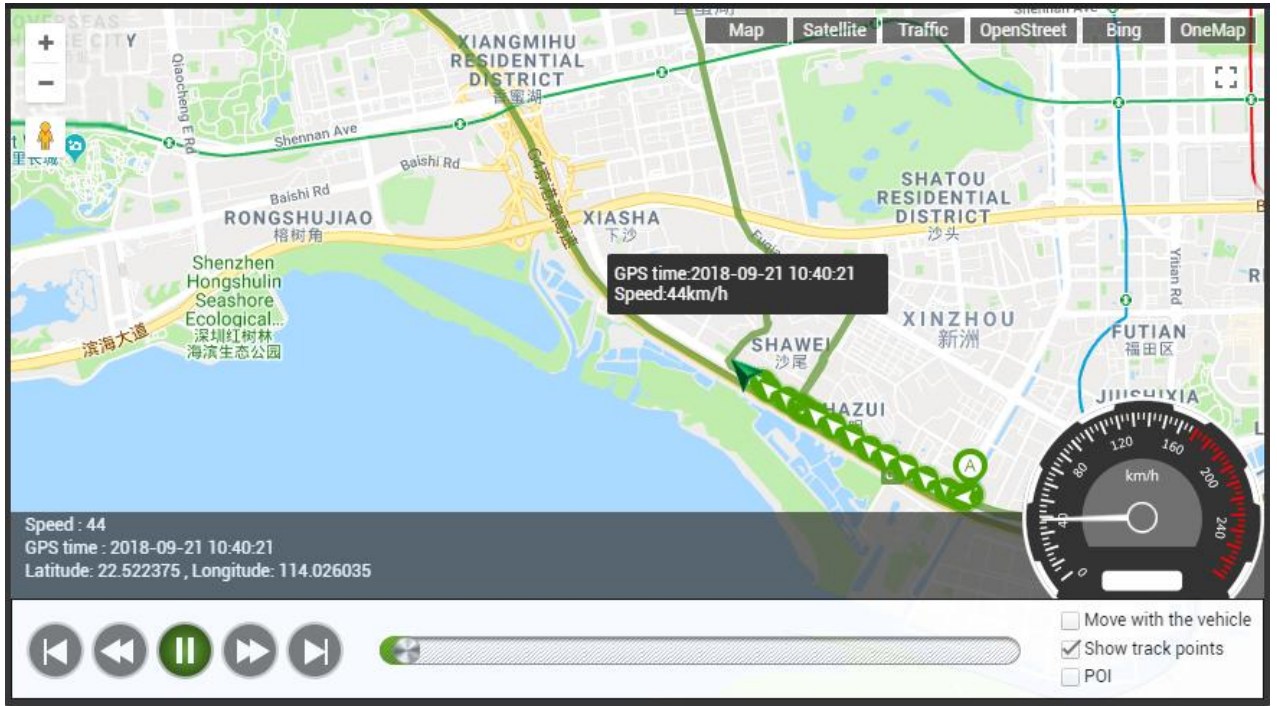
Right-click on the device and click on "Historical data", click on the "Map" button, then you can view the movement track.



MDVR0927-322830

From: 2018-09-27 00:00 To: 2018-09-27 23:59 Speed: >= 0 Address Ignore drift

Tracker name	GPS time	Receiving time	GPS valid	Speed	Latitude	Longitude	Location	Alarm type	Altitude	Direction	North An	Number of satell
MDVR0927-322830	2018-09-27 15:57:47	2018-09-27 15:57:46	Valid	0	22.513301	114.057006		Track By Time Interval	50	North	0	5
MDVR0927-322830	2018-09-27 15:57:49	2018-09-27 15:57:52	Valid	0	22.513301	114.057008		Exit GPS Blind Spot	52	North	0	5
MDVR0927-322830	2018-09-27 15:57:52	2018-09-27 15:58:10	Valid	0	22.513305	114.057003		CH2 video loss	53	North	0	5
MDVR0927-322830	2018-09-27 15:57:57	2018-09-27 15:58:14	Valid	0	22.513301	114.057001		Track By Time Interval	55	North	0	5
MDVR0927-322830	2018-09-27 15:58:07	2018-09-27 15:58:17	Valid	0	22.513275	114.057025		Track By Time Interval	57	North	0	5
MDVR0927-322830	2018-09-27 15:58:17	2018-09-27 15:58:22	Valid	0	22.513240	114.057053		Track By Time Interval	59	Sout...	147	5
MDVR0927-322830	2018-09-27 15:58:27	2018-09-27 15:58:23	Valid	0	22.513241	114.057053		Track By Time Interval	59	Sout...	149	5
MDVR0927-322830	2018-09-27 15:58:37	2018-09-27 15:58:36	Valid	0	22.513245	114.057050		Track By Time Interval	59	Sout...	150	5
MDVR0927-322830	2018-09-27 15:58:47	2018-09-27 15:58:52	Valid	0	22.513238	114.057053		Track By Time Interval	59	Sout...	150	5
MDVR0927-322830	2018-09-27 15:58:57	2018-09-27 15:58:58	Valid	1	22.513235	114.057053		Track By Time Interval	59	Sout...	150	5
MDVR0927-322830	2018-09-27 15:59:07	2018-09-27 15:59:21	Valid	0	22.513235	114.057048		Track By Time Interval	59	Sout...	150	5



If you have any questions, please do not hesitate to email us at info@meitrack.com.