

AI Dashcam 2k/4G/AI Algorithm/FOTA/Easy Installation

MD300



Key Advantages

► AI Intelligent Early Warning

ADAS
DMS

► Efficient Fleet Management

Seamless upload platform for driving events
Supports MS06 platform

► High-precision Location Information

Dual-frequency positioning + DR (optional)
RTK (optional)

► High-quality Audio & Video

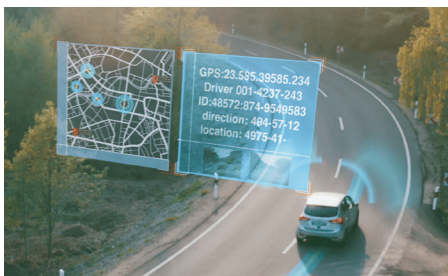
2K ultra-clear, 1080P
CVBS display screen

► Compact and Flexible Design

Ensures clear visibility for the driver
117*70*120mm / 117*70*80mm
310g / 265g

► Easy to Install and Integrate

Rich in interfaces:
Max 2 DIN/Max 2 DOUT/RS232/RS485
Dual CAN/1-Wire



Fleet Tracking

Provides real-time location monitoring, helping businesses optimize route planning and ensure vehicle safety



Real-time Fatigue Monitoring

Ensures responsibility for driver safety while reducing your accident insurance premiums



AI-powered Driving Coaching

Uses AI to analyze driving behavior, providing personalized recommendations to enhance customer satisfaction

Key Features



105° horizontal road-facing lens

Built-in 2K ADAS camera
Clear and detailed image



100° horizontal driver-facing lens

Captures video up to 1080P
Clear and detailed image



Support up to 4-channel video recording

Regular recording and AI alarm recording
Expands monitoring with extra video channels



Built-in WiFi and 4G communication module

Seamlessly integrates with fleet management system



Dual CPU control

Supports low power mode,
protecting the vehicle's battery from draining

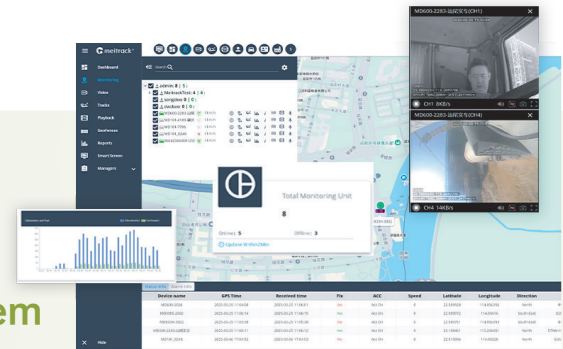


MAX 2*1T storage

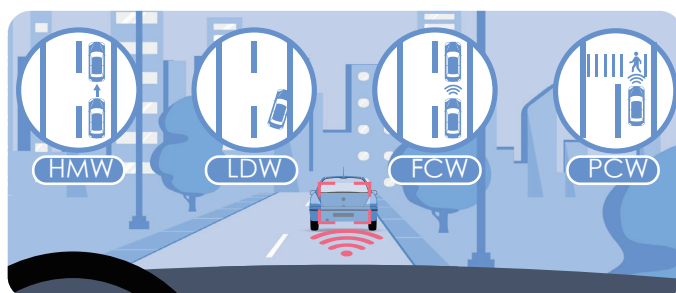
Secure & Reliable Data Storage

Compatible with Meitrack's MS06 platform
Smarter Management for Higher Efficiency

Meitrack Advanced GPS Tracking System

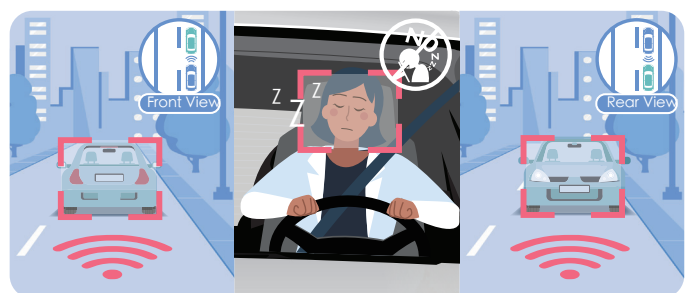


AI Smart Alert



ADAS

Watch out lane departure
Watch out for the front vehicle
Watch out for pedestrian
Keep a safe distance



DMS

No smoking
Please face forward
Please stay awake
Please return to the seat
Do not block the DMS lens

No phone call
Attention, drowsiness detected
Please fasten your seat belt
Do not block the DMS IR

Feature Specifications

Power	Rated Voltage	DC: 11.4-40V, rated 12V 2A, external power box, available in N1 and N2 versions
Storage Medium	Micro SD Card	2*Micro SD cards, single card supports up to 1TB, Class 10 and above
System Structure	System Operation	Dual CPU operation, supports low power mode
Audio & Video	Video input	Option 1: MAX 4 channels, built-in 2K ADAS + built-in 1080P DMS + external 2 channels 720P AHD cameras (optional) Option 2: MAX 3 channels, built-in 2K ADAS + external 2 channels 720P AHD cameras (optional)
	Video output	1 channel CVBS aviation plug output (level: 1.0Vp-p, impedance: 75Ω)
	Video compression	H.264/H.265 configurable, default H.265
	Audio input	1st channel audio input: built-in MIC input (supports intercom, two-way calling, and recording or listening for channels 1 and 2) 2nd channel audio input supported 3rd channel AHD camera audio input requires camera support (for recording or listening)
	Audio output	1 channel built-in speaker output, 1 channel external display screen with built-in speaker output
	Audio compression	G.726/G.711a/AAC
	Video search and playback	Search and playback by channel, recording type, bitrate type, or time
	Recording method	Regular recording and AI alarm recording; synchronized audio and video recording
	WiFi	802.11b/g/n, frequency 2.4G, supports AP/STA mode, can connect to MM+ APP for parameter configuration via button press
	GNSS	Supports antenna insertion/removal/short-circuit detection
Power Consumption	Working power consumption	Main unit audio and video on with 2 built-in cameras: approx. 6W; with 2 external cameras, during the day approx. 12.5W (13W with display), at night approx. 14W (14.5W with display).
Protocol	Supported protocols	Meitrack protocol (CCE) + RTMP (audio & video transmission protocol, also compatible with Meitrack's private audio & video transmission protocol)
Others	Bluetooth	Supports master-slave dual mode, can read Bluetooth accessories
	SPI memory	MCU: Built-in 8MB, used for storing GPRS/SMS/GPS log data
	Operating temperature	Without battery: -20°C ~ 70°C
	Built-in accelerometer	3-axis accelerometer, supports motion and stationary detection (hardware supports 6-axis sensor)
	I/O interfaces	N1 version interfaces: SOS*1 + ACC*1 + IN/AD/OUT*2 (total 2 multiplexed) + RS232*1 + CAN*1 + 5V_OUT*1 + DC_IN*1 + GND*1 + 1-Wire*1 N2 version interfaces: SOS*1 + ACC*1 + IN/AD/OUT*6 (total 6 multiplexed) + OUT*1 (independent) + RS232*1 + CAN*2 + 5V_OUT*1 + DC_IN*1 + GND*2 + 12V_OUT*1 + RS485*1 + 1-Wire*1
	Dimensions	117*70*120mm (dual cameras with bracket), 117*70*80mm (single camera without bracket)
	Weight	310g (dual cameras without accessories), 265g (single camera without accessories)



Feature Specifications

Frequency band	MD300-E	GSM: 900/1800MHZ; WCDMA: B1/B5/B8; LTE-FDD:B1/B3/B5/B7/B8/B20/B28A/B28B; LTE-TDD:B38/B40;
	MD300-AU	GSM:850/900/1800/1900MHZ; WCDMA:B1/B2/B4/B5/B8; LTEFDD:B1/B2/B3/B4/B5/B7/B8/B28/B66; LTE ETDD:B40;
	MD300-A	LTE FDD: B2/B4/B12; WCDMA:B2/B4/B5;
	MD300-J	LTE FDD:B1/B3/B8/B18/B19/B26; LTE TDD:B41; WCDMA:B1/B6/B8/B19;

Optional DMS Camera

- The DMS camera can be rotated to fit different mounting positions, solving angle deviation issues and avoiding unnecessary reinstallations.



Accessories Supported



ACA303

AHD 720P metal small
conch Camera



ACA501

AHD 720P C2 Small
Waterproof Camera



ACA503

AHD 720P Small
Waterproof Camera



ACP505

AHD 720P A-pillar
DMS Camera



In-vehicle CVBS Display



AST101

Bluetooth Temperature
& Humidity Sensor



AB402

Bluetooth Beacon



Magnetic Card Reader
(Thailand DLT)

CE DLT